



Nallamuthu Gounder Mahalingam College

(An Autonomous Institution, Affiliated to Bharathiar University)

90, Palghat Road, Pollachi - 642001, Coimbatore, Tamil Nadu, India.

95th Rank in NIRF – 2023 among Colleges in India.



7.1.4. Maintenance of Water bodies and Distribution System in the campus

Water Distribution System in Campus

The water distribution system at the institution is well-designed and operates efficiently to ensure that students and faculty members have continuous access to clean and dependable water across the campus. The institution primarily sources its water from 2 wells and a bore well. Rainwater collected from rooftops is directed to recharge pits, and surface runoff water is directed through underground trenches to pits to replenish the underground aquifers.

Water from the wells and bore wells is stored in strategically located large tanks throughout the campus, providing substantial storage capacity to ensure an ample water supply. Municipal water is held in a sizable underground tank.

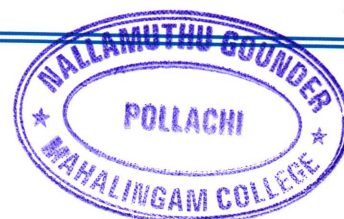
To facilitate effective water distribution, designated water taps are situated at different locations throughout the college, offering easy access to water for students and staff. Water refill stations (Water Doctors) are available on each floor of the buildings to dispense safe and clean drinking water. These water purifiers are connected to individual pipelines from the municipal water storage tank.

Moreover, the college has implemented a sprinkler system to irrigate the lawns and preserve the green spaces on the campus. The sprinklers are positioned to efficiently cover large areas, ensuring uniform water distribution. This practice not only contributes to maintaining the campus's visual appeal but also aids in water conservation by minimizing wastage.

PRINCIPAL
N G M COLLEGE, POLLACHI

Criteria: **VII : Institutional Values and Best Practices**

Page | 1



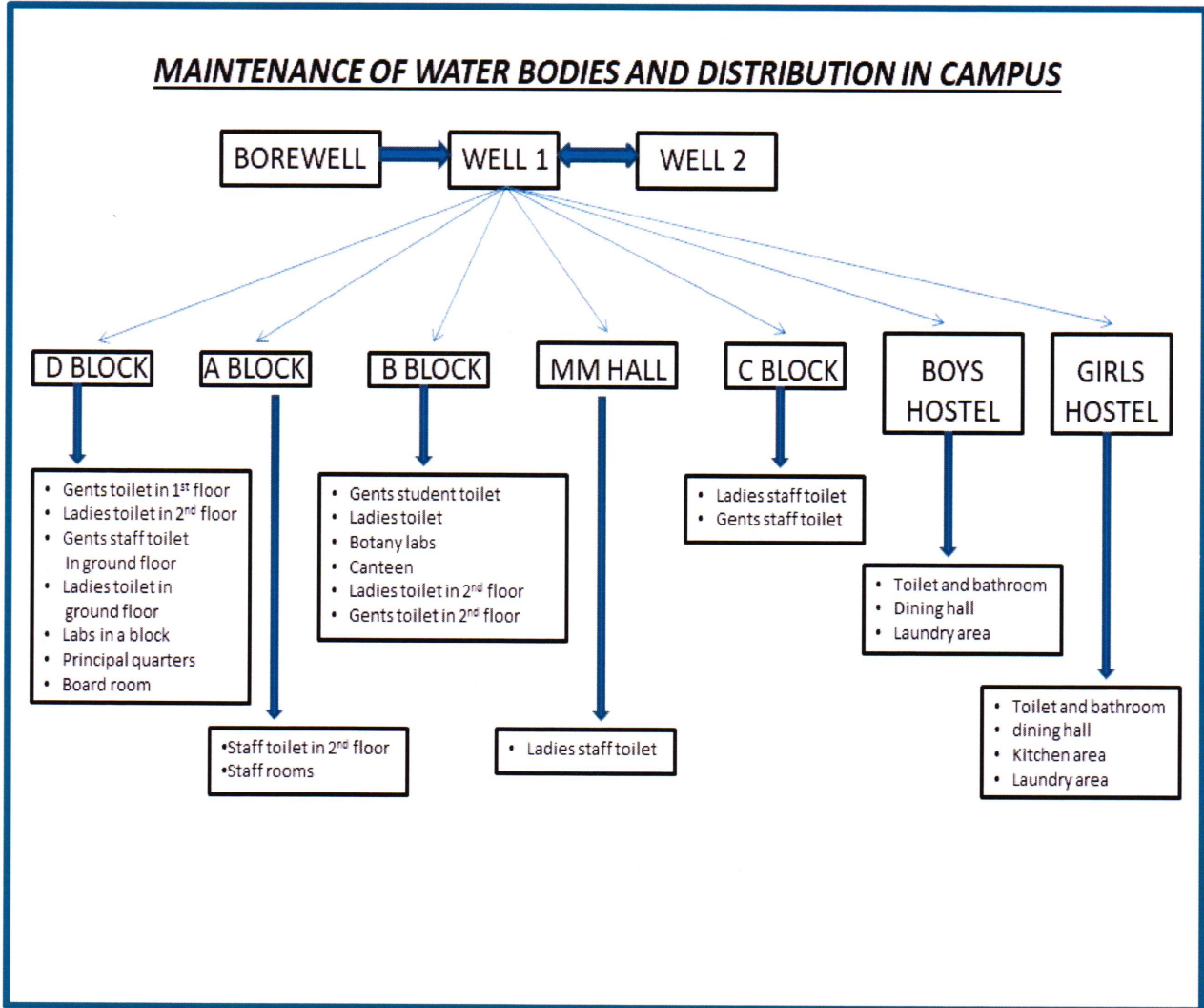


Nallamuthu Gounder Mahalingam College

(An Autonomous Institution, Affiliated to Bharathiar University)
 90, Palghat Road, Pollachi - 642001, Coimbatore, Tamil Nadu, India.
 95th Rank in NIRF – 2023 among Colleges in India.

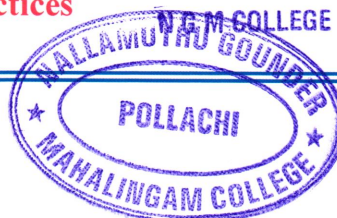


Distribution Structure of Water bodies in the College



PRINCIPAL

N.G.M. COLLEGE, POLLACHI



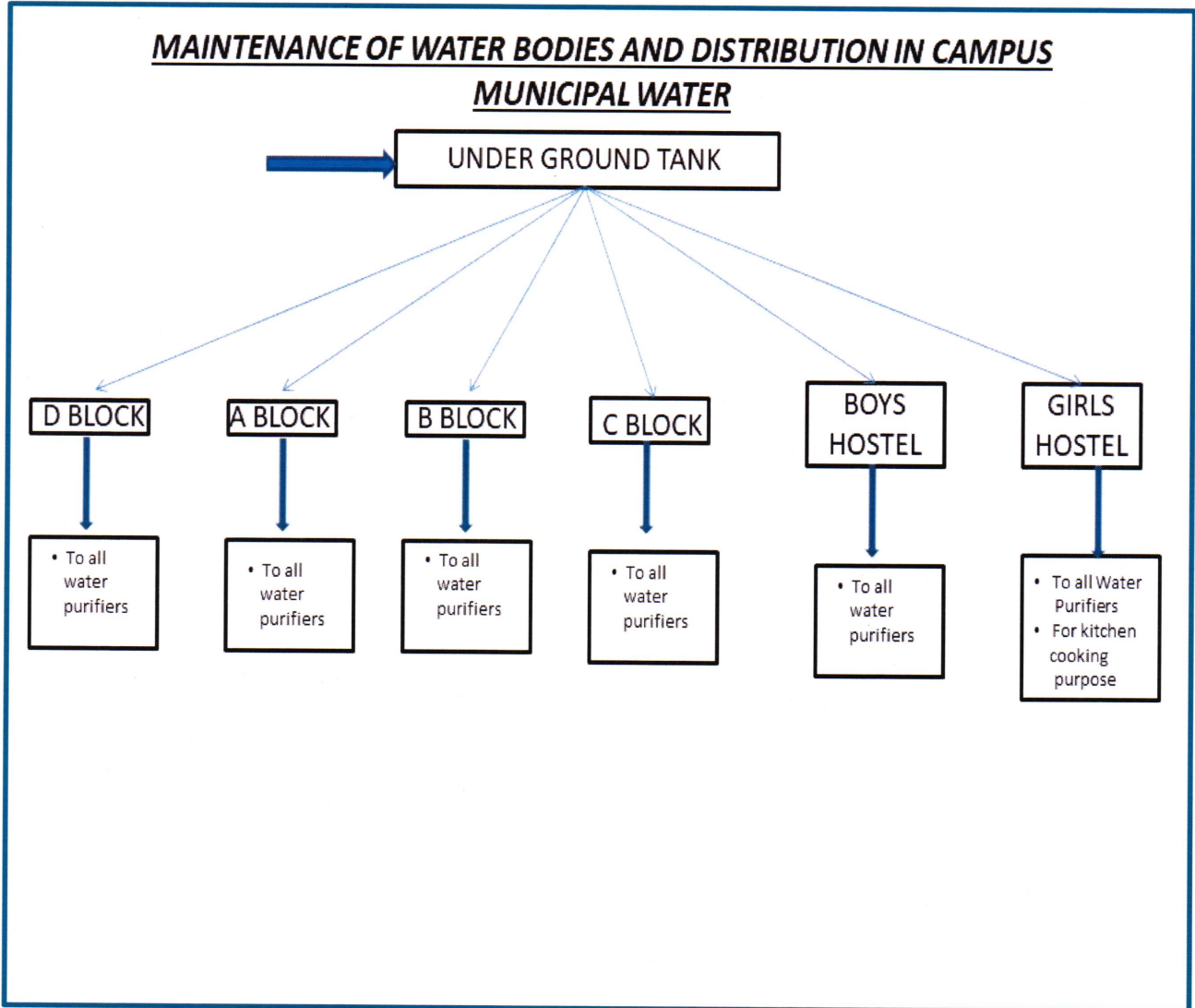


Nallamuthu Gounder Mahalingam College

(An Autonomous Institution, Affiliated to Bharathiar University)
 90, Palghat Road, Pollachi - 642001, Coimbatore, Tamil Nadu, India.
 95th Rank in NIRF – 2023 among Colleges in India.



Distribution Structure of Municipal Water to all Water Purifiers in the College



PRINCIPAL
 N G M COLLEGE, POLLACHI

Criteria: **VII : Institutional Values and Best Practices**





Nallamuthu Gounder Mahalingam College

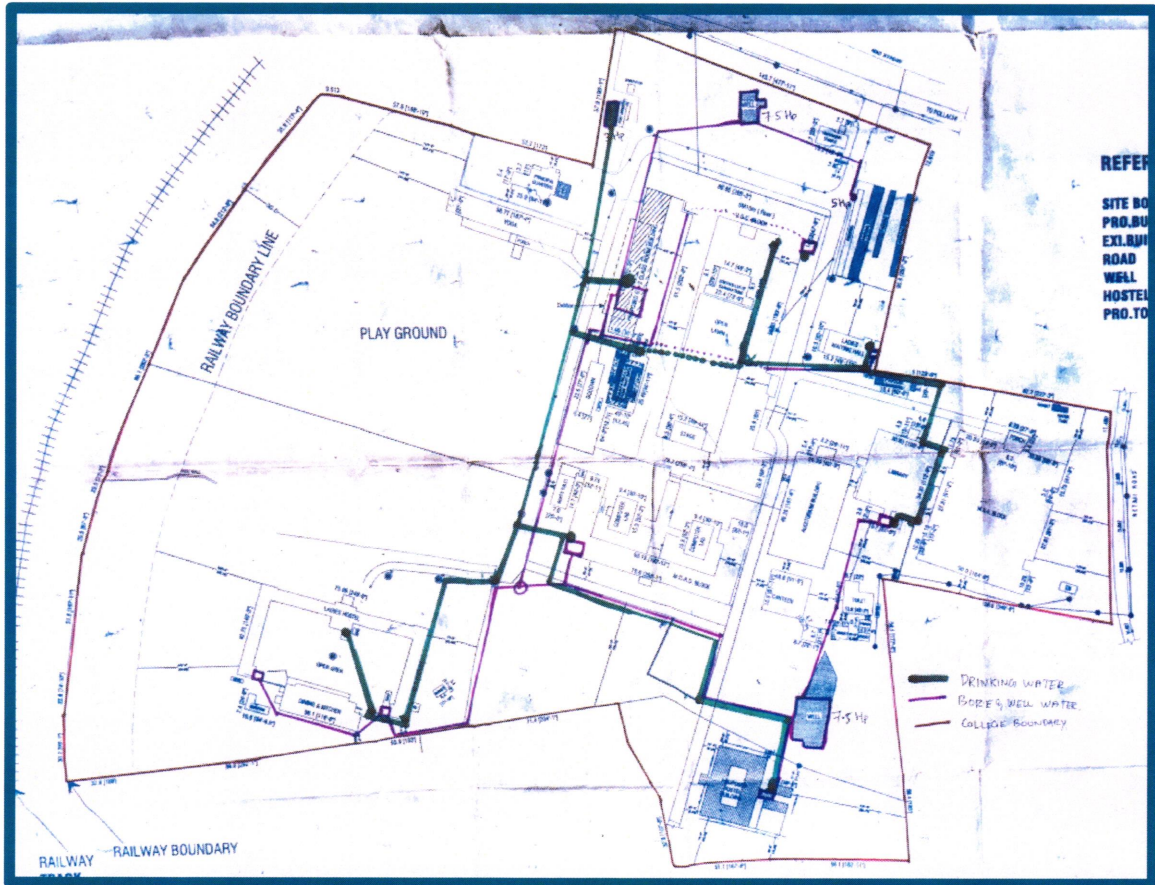
(An Autonomous Institution, Affiliated to Bharathiar University)

90, Palghat Road, Pollachi - 642001, Coimbatore, Tamil Nadu, India.

95th Rank in NIRF – 2023 among Colleges in India.



Water Distribution - Map



PRINCIPAL
N G M COLLEGE, POLLACHI

Criteria: **VII : Institutional Values and Best Practices**





Nallamuthu Gounder Mahalingam College

(An Autonomous Institution, Affiliated to Bharathiar University)

90, Palghat Road, Pollachi - 642001, Coimbatore, Tamil Nadu, India.

95th Rank in NIRF - 2023 among Colleges in India.



Drinking Water Analysis Report

TIN : 33976204357 CST: 861755 DL: 26-03-08 Area Code : [3][1][7]



Regd. Office : No. : 25-A, Nehru Nagar, Kasthurinaikentalpalayam, Vadavalli, (P.O), Coimbatore - 641 041.

Cell : 97894 - 62617 E-mail : globalenvirosystems.cbe@gmail.com, globalenvirosystems@yahoo.com

Website : www.globalenvirosystems.com

Coimbatore -25-02-2022

To
THE PRINCIPAL
NGM COLLAGE
Palghat road
Pollachi- 642001

TEST REPORT

REPORT NO:	GES/10118/2022	REPORT DATE:	25-02-2022
Company Name and Address			
Sample Reference No	GES/WTP/22/W-16713		
Customer Reference	WELL WATER		
Sampling Procedure	IS 3025 Part-1		
Sample Collected BY	Customer		
Sample collected date	25-02-2022		

Parameters	UNIT	RESULT	DRINKING STDS (IS 10500:2012)
PH at 25 °C	-	7.18	6.5-8.5
Turbidity	NTU,Max	0.01	5
Total dissolved solids	mg/l	147	2000
Total Hardness	mg/l	90.7	--
Magnesium (as Mg)mg/lMax	mg/l	11.0	100

Branch Office : Door No. 179/ 5,6,7, 1st Floor, Kaliyammal Street, (Opp. Corporation Park,) K.K. Pudur (P.O.), Saibabacolony, Coimbatore - 641 038. Cell : 97894 62617 E-mail : durai_2004@rediffmail.com

PRINCIPAL

NGM COLLEGE, POLLACHI

Criteria: **VII : Institutional Values and Best Practices**

Page | 5





Nallamuthu Gounder Mahalingam College

(An Autonomous Institution, Affiliated to Bharathiar University)
90, Palghat Road, Pollachi - 642001, Coimbatore, Tamil Nadu, India.
95th Rank in NIRF – 2023 among Colleges in India.



Parameter	Unit	Observed Value	Standard / Limit
Odour	mg/l	Agreeable	Agreeable
Total alkalinity as CaCO ₃	mg/l	80.5	600
Zinc	mg/l	0.5	15
Sulphates as SO ₄	mg/l	98.1	400
Nitrate as NO ₃	mg/l	18	No relaxation
Fluoride as F	mg/l	BDL	1.5
Free residual chlorine as CR	mg/l	BDL	1.0

Remarks :

SUGGESTION – The water can be used for drinking purpose.

Approved by: GLOBAL ENVIRO SYSTEMS P. DURAISAMY .Msc PhD (ENVIRONMENT CONSULTANT)

FOR GLOBAL ENVIRO SYSTEMS

Chemist: G VINOTH

G. Vinoth

P. Duraisamy
PARTNER

Note:

BDL –Below Detectable Limit < 0.001mg/l

.The test results only to the items received & tested

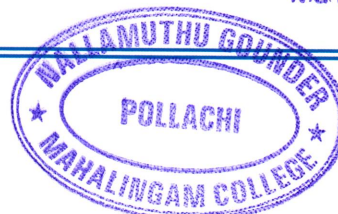
.The test report shall not be reproduce anywhere except in full and in the same format without the permission of the laboratory.

.This report is invalid if any details are written in pen other than the signature .GES Labs is not responsible for any manual correction made in the Report.

Criteria: **VII : Institutional Values and Best Practices**

[Signature]
PRINCIPAL
N.G.M COLLEGE, POLLACHI

Page | 6





Nallamuthu Gounder Mahalingam College

(An Autonomous Institution, Affiliated to Bharathiar University)

90, Palghat Road, Pollachi - 642001, Coimbatore, Tamil Nadu, India.

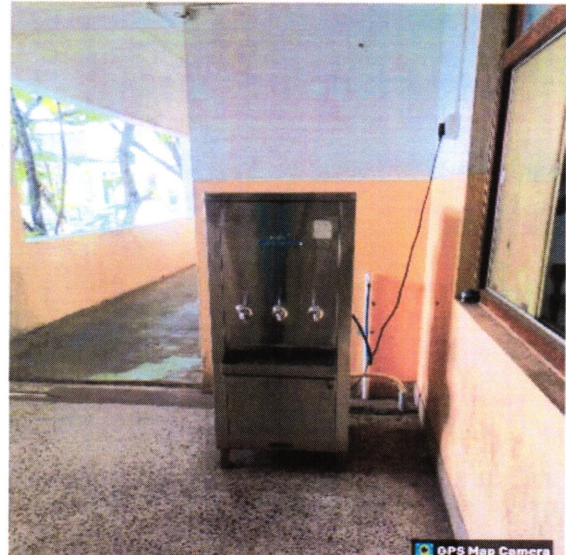
95th Rank in NIRF – 2023 among Colleges in India.



Water Purifiers



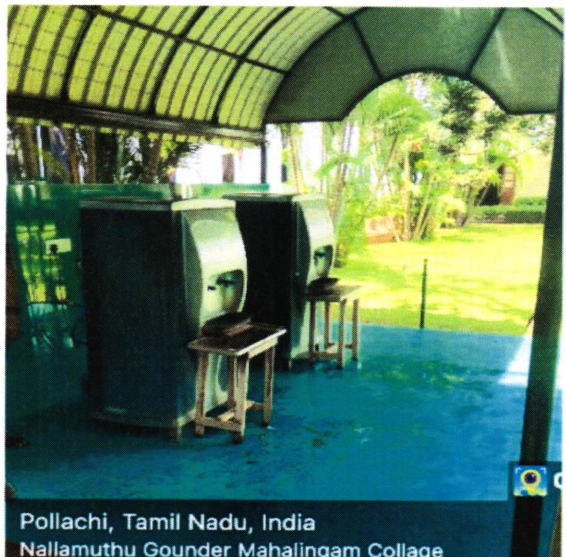
Pollachi, Tamil Nadu, India
Nallamuthu Gounder Mahalingam Collage
Lat 10.658464°
Long 76.994157°
18/03/24 02:24 PM GMT +05:30



Pollachi, Tamil Nadu, India
Nallamuthu Gounder Mahalingam Collage
Lat 10.658464°
Long 76.994157°
18/03/24 02:28 PM GMT +05:30



Pollachi, Tamil Nadu, India
Nallamuthu Gounder Mahalingam Collage
Lat 10.658464°
Long 76.994157°
18/03/24 02:12 PM GMT +05:30



Pollachi, Tamil Nadu, India
Nallamuthu Gounder Mahalingam Collage
Lat 10.658464°
Long 76.994157°
18/03/24 02:14 PM GMT +05:30

PRINCIPAL

N.G.M. COLLEGE, POLLACHI

Criteria: **VII : Institutional Values and Best Practices**

